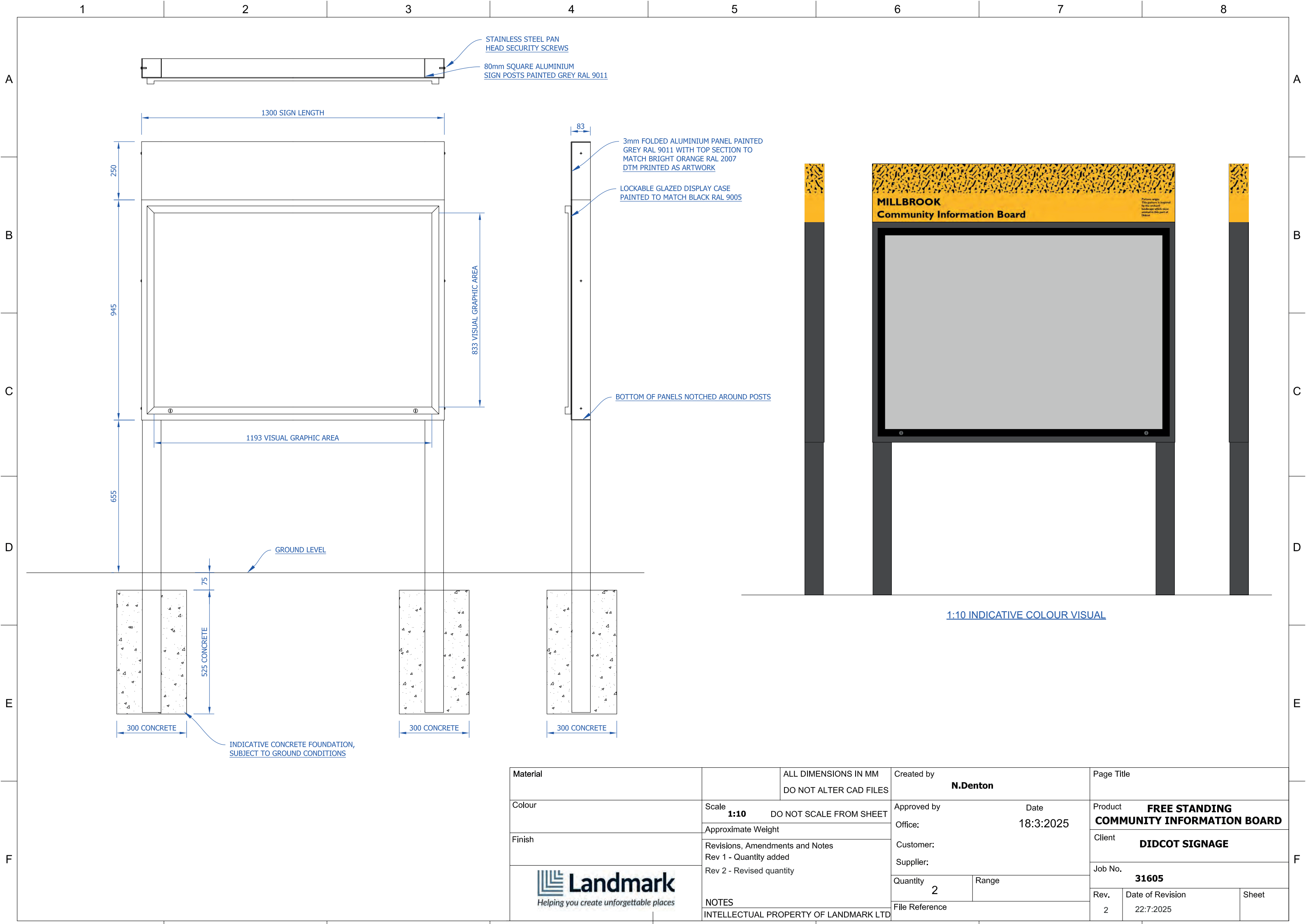


Didcot Toolkit Community Board.





Operation & Maintenance (O&M) Manual – Wayfinding

Project: Didcot Wayfinding
Client: South Oxfordshire and Vale of White Horse Council
Supplier: Hornbeck Ltd t/a Landmark

Product Summary

The following external furniture items were designed, manufactured, and supplied by Landmark for Didcot:

Item Description	Key Materials / Finish
Totem A	Powder coated aluminium and stainless steel
Totem B	Powder coated aluminium and stainless steel
Waymarker post	Powder coated aluminium
Fingerpost	Powder coated aluminium
Community Board	Powder coated aluminium + glazing

Material & Finish Information

- Stainless-steel Components:
Internal structure and below ground elements for totems in grade 304.
- Aluminium Components:
Above ground external elements powder coated RAL2007

Maintenance Instructions

Stainless Steel (internal or below ground so maintenance unlikely):

- Clean with warm water and mild detergent to prevent tea-staining.
- Rinse thoroughly and wipe dry to prevent watermarks.

Powder coated aluminium:

- Clean with warm water and mild detergent to prevent tea-staining.
- Rinse thoroughly and wipe dry to prevent watermarks.
- In the event of graffiti use a standard graffiti remover and test compatibility and colour fading by applying a small amount in an inconspicuous area first.

Warranty Statement

Landmark products (unless otherwise specified) have a 1-year structural guarantee dating from delivery to site. This does not include:

- Damage subsequent to delivery if not caused by Landmark
- Damage caused by vandalism
- Deterioration caused by adverse conditions above or below ground

Contact Information

Landmark (Hornbeck Ltd t/a Landmark)
1 Centrus, Mead Lane, Hertford, SG13 7GX
01992 939279
enquiries@madebylandmark.com



CREATING UNFORGETTABLE PLACES.

0808 129 3773
enquiries@madebylandmark.com
www.madebylandmark.com

We can help you with:

- Branding and concept proposals
- Visitor experience enhancements
- Interpretation and graphic design
 - Wayfinding and site surveys
 - Fabrication and installation
- Maintenance and product care

Accreditations

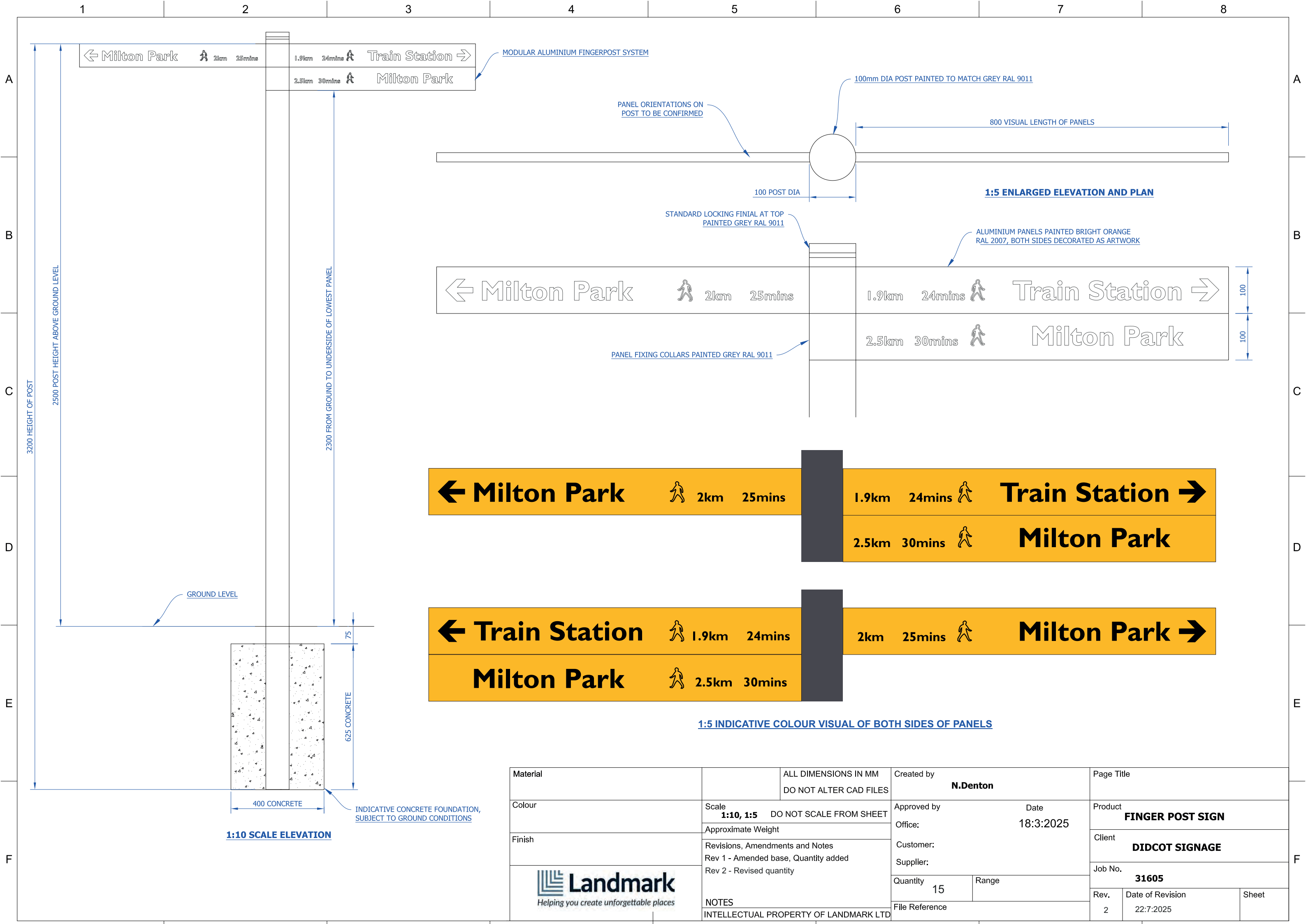


FSC® certified products
available on request



Didcot Toolkit Fingerpost.





Material		ALL DIMENSIONS IN MM DO NOT ALTER CAD FILES	Created by N.Denton	Page Title
Colour	Scale 1:10, 1:5	DO NOT SCALE FROM SHEET	Approved by Office:	Product FINGER POST SIGN
Finish	Approximate Weight		Customer:	Client DIDCOT SIGNAGE
	Revisions, Amendments and Notes Rev 1 - Amended base, Quantity added Rev 2 - Revised quantity		Supplier:	Job No. 31605
			Quantity 15	Rev. 2
			Range	Date of Revision 22:7:2025
			File Reference	Sheet

Operation & Maintenance (O&M) Manual – Wayfinding

Project: Didcot Wayfinding
Client: South Oxfordshire and Vale of White Horse Council
Supplier: Hornbeck Ltd t/a Landmark

Product Summary

The following external furniture items were designed, manufactured, and supplied by Landmark for Didcot:

Item Description	Key Materials / Finish
Totem A	Powder coated aluminium and stainless steel
Totem B	Powder coated aluminium and stainless steel
Waymarker post	Powder coated aluminium
Fingerpost	Powder coated aluminium
Community Board	Powder coated aluminium + glazing

Material & Finish Information

- Stainless-steel Components:
Internal structure and below ground elements for totems in grade 304.
- Aluminium Components:
Above ground external elements powder coated RAL2007

Maintenance Instructions

Stainless Steel (internal or below ground so maintenance unlikely):

- Clean with warm water and mild detergent to prevent tea-staining.
- Rinse thoroughly and wipe dry to prevent watermarks.

Powder coated aluminium:

- Clean with warm water and mild detergent to prevent tea-staining.
- Rinse thoroughly and wipe dry to prevent watermarks.
- In the event of graffiti use a standard graffiti remover and test compatibility and colour fading by applying a small amount in an inconspicuous area first.

Warranty Statement

Landmark products (unless otherwise specified) have a 1-year structural guarantee dating from delivery to site. This does not include:

- Damage subsequent to delivery if not caused by Landmark
- Damage caused by vandalism
- Deterioration caused by adverse conditions above or below ground

Contact Information

Landmark (Hornbeck Ltd t/a Landmark)
1 Centrus, Mead Lane, Hertford, SG13 7GX
01992 939279
enquiries@madebylandmark.com



CREATING UNFORGETTABLE PLACES.

0808 129 3773
enquiries@madebylandmark.com
www.madebylandmark.com

We can help you with:

- Branding and concept proposals
- Visitor experience enhancements
- Interpretation and graphic design
 - Wayfinding and site surveys
 - Fabrication and installation
- Maintenance and product care

Accreditations




FSC® certified products
available on request

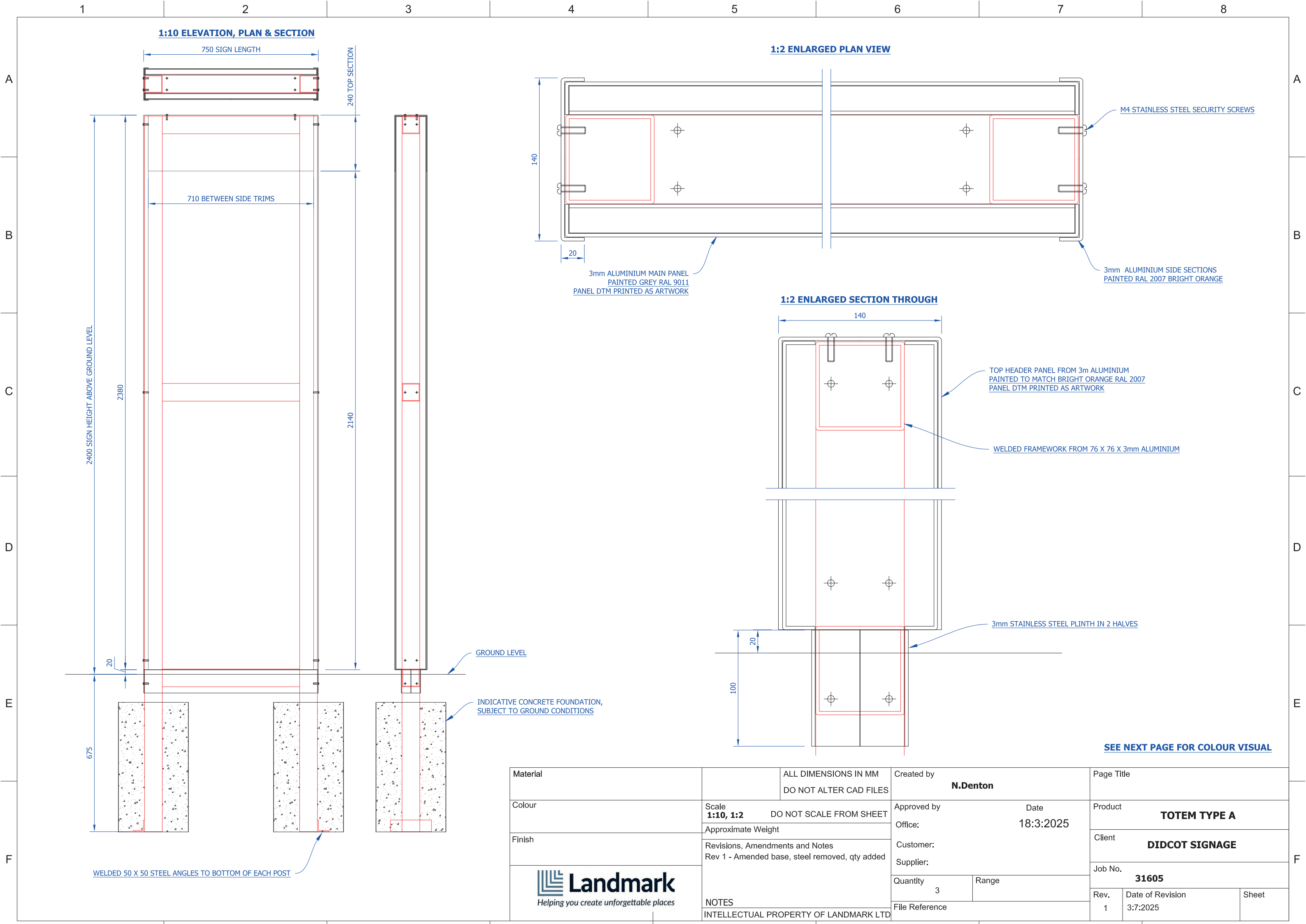



Didcot Toolkit Totem A.





Material		ALL DIMENSIONS IN MM DO NOT ALTER CAD FILES	Created by N.Denton		Page Title			
Colour	Scale 1:10	DO NOT SCALE FROM SHEET	Approved by		Date		Product TOTEM TYPE A	
	Approximate Weight		Office:		18:3:2025			
Finish	Revisions, Amendments and Notes Rev 1 - Quantity added		Customer:		Client DIDCOT SIGNAGE			
			Supplier:		Job No. 31605			
	NOTES INTELLECTUAL PROPERTY OF LANDMARK LTD		Quantity 3	Range		Rev. 1	Date of Revision 3:7:2025	Sheet
			File Reference					



Material		ALL DIMENSIONS IN MM DO NOT ALTER CAD FILES	Created by N.Denton		Page Title			
Colour	Scale 1:10, 1:2 DO NOT SCALE FROM SHEET		Approved by		Date		Product TOTEM TYPE A	
	Approximate Weight		Office:		18:3:2025			
Finish	Revisions, Amendments and Notes Rev 1 - Amended base, steel removed, qty added		Customer:		Client DIDCOT SIGNAGE			
			Supplier:		Job No. 31605			
	NOTES INTELLECTUAL PROPERTY OF LANDMARK LTD		Quantity 3	Range		Rev. 1	Date of Revision 3:7:2025	Sheet
			File Reference					

Operation & Maintenance (O&M) Manual – Wayfinding

Project: Didcot Wayfinding
Client: South Oxfordshire and Vale of White Horse Council
Supplier: Hornbeck Ltd t/a Landmark

Product Summary

The following external furniture items were designed, manufactured, and supplied by Landmark for Didcot:

Item Description	Key Materials / Finish
Totem A	Powder coated aluminium and stainless steel
Totem B	Powder coated aluminium and stainless steel
Waymarker post	Powder coated aluminium
Fingerpost	Powder coated aluminium
Community Board	Powder coated aluminium + glazing

Material & Finish Information

- Stainless-steel Components:
Internal structure and below ground elements for totems in grade 304.
- Aluminium Components:
Above ground external elements powder coated RAL2007

Maintenance Instructions

Stainless Steel (internal or below ground so maintenance unlikely):

- Clean with warm water and mild detergent to prevent tea-staining.
- Rinse thoroughly and wipe dry to prevent watermarks.

Powder coated aluminium:

- Clean with warm water and mild detergent to prevent tea-staining.
- Rinse thoroughly and wipe dry to prevent watermarks.
- In the event of graffiti use a standard graffiti remover and test compatibility and colour fading by applying a small amount in an inconspicuous area first.

Warranty Statement

Landmark products (unless otherwise specified) have a 1-year structural guarantee dating from delivery to site. This does not include:

- Damage subsequent to delivery if not caused by Landmark
- Damage caused by vandalism
- Deterioration caused by adverse conditions above or below ground

Contact Information

Landmark (Hornbeck Ltd t/a Landmark)
1 Centrus, Mead Lane, Hertford, SG13 7GX
01992 939279
enquiries@madebylandmark.com



CREATING UNFORGETTABLE PLACES.

0808 129 3773
enquiries@madebylandmark.com
www.madebylandmark.com

We can help you with:

- Branding and concept proposals
- Visitor experience enhancements
- Interpretation and graphic design
 - Wayfinding and site surveys
 - Fabrication and installation
- Maintenance and product care

Accreditations

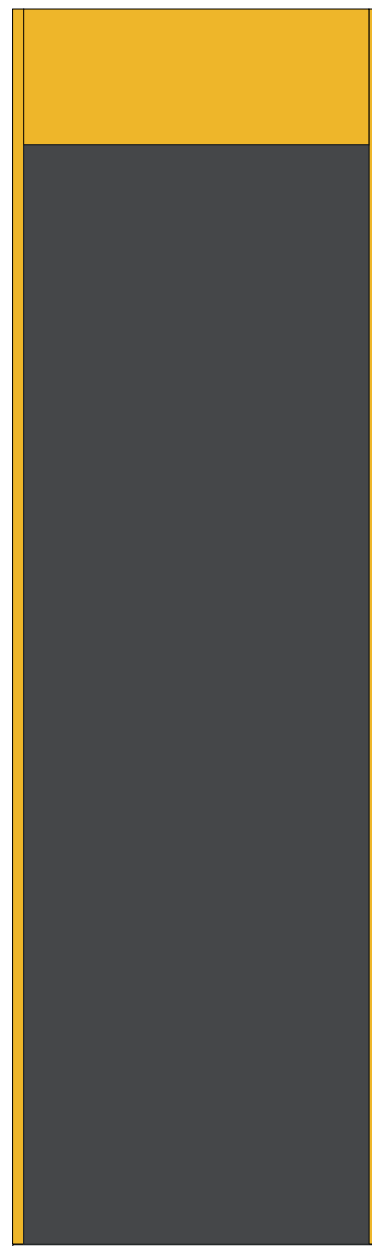
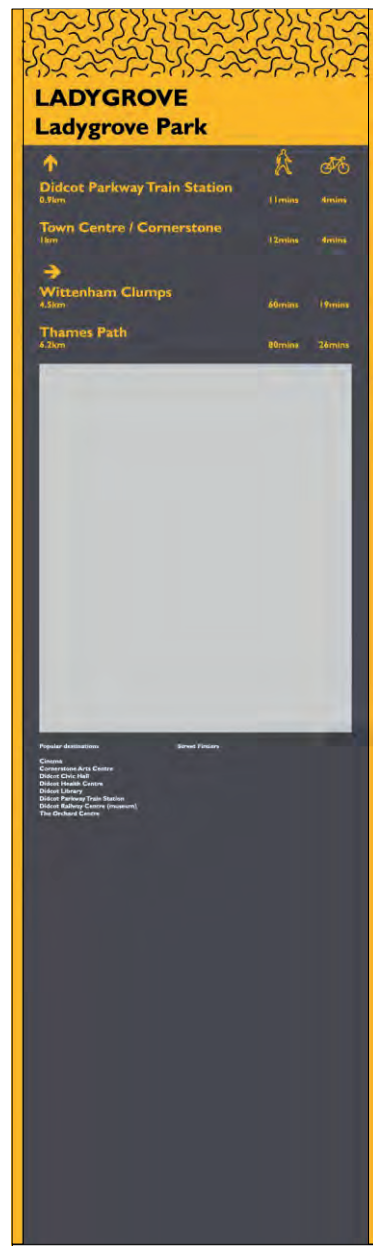



FSC® certified products
available on request

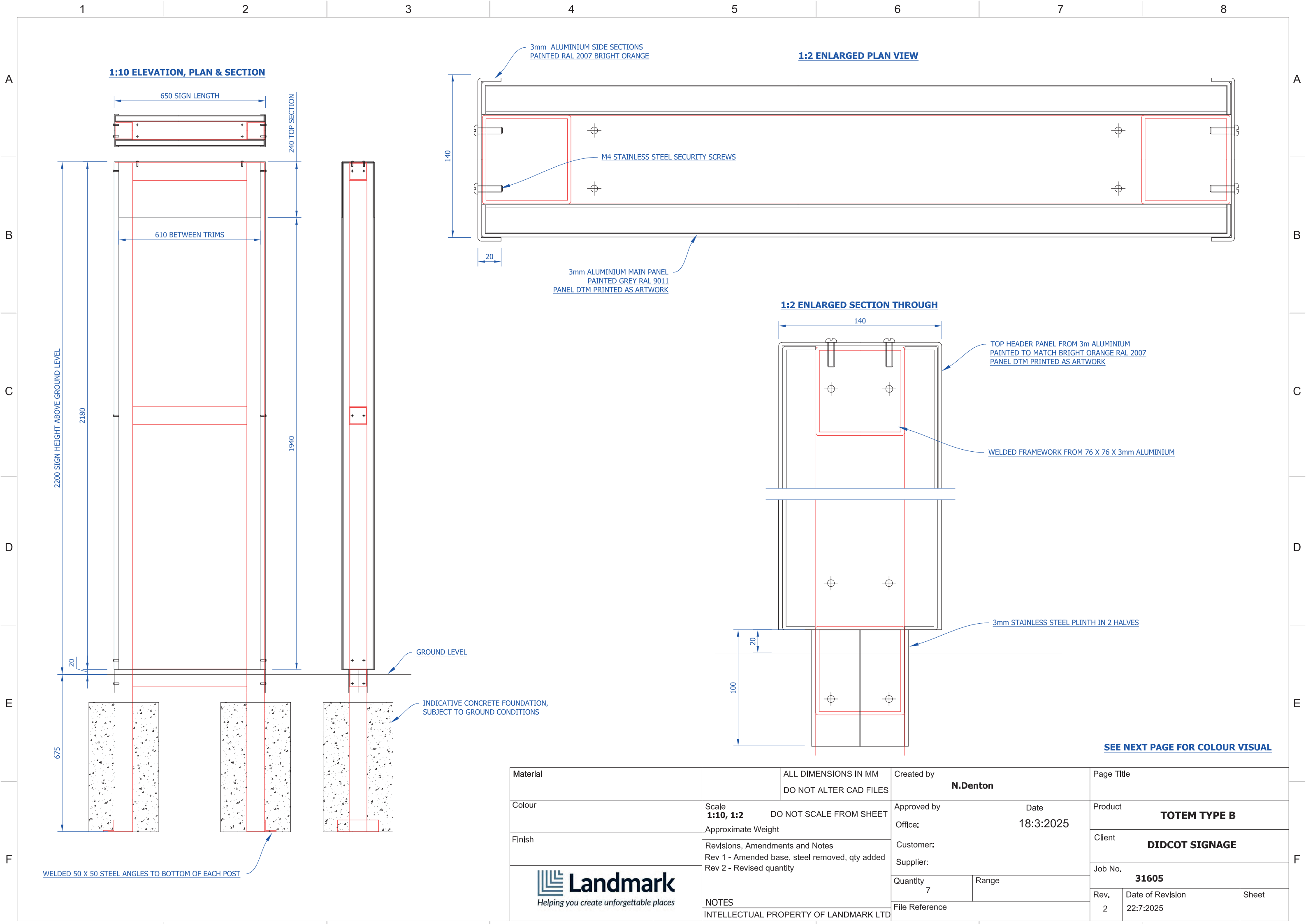



Didcot Toolkit Totem B.





Material		ALL DIMENSIONS IN MM DO NOT ALTER CAD FILES	Created by N.Denton		Page Title		
Colour	Scale 1:10	DO NOT SCALE FROM SHEET	Approved by		Date		Product TOTEM TYPE B
	Approximate Weight		Office:		18:3:2025		
Finish	Revisions, Amendments and Notes Rev 1 - Quantity added Rev 2 - Revised quantity		Customer:		Client DIDCOT SIGNAGE		
	 NOTES INTELLECTUAL PROPERTY OF LANDMARK LTD		Supplier:		Job No. 31605		
Quantity 7			Range		Rev. 2	Date of Revision 22:7:2025	Sheet
File Reference							



Material		ALL DIMENSIONS IN MM DO NOT ALTER CAD FILES	Created by N.Denton	Page Title		
Colour	Scale 1:10, 1:2	DO NOT SCALE FROM SHEET	Approved by	Date 18:3:2025	Product TOTEM TYPE B	
	Approximate Weight		Office:		Client DIDCOT SIGNAGE	
Finish	Revisions, Amendments and Notes Rev 1 - Amended base, steel removed, qty added Rev 2 - Revised quantity		Customer:		Job No. 31605	
	<div>Landmark <i>Helping you create unforgettable places</i></div>		Supplier:		Rev. 2	
Quantity 7			Range	Date of Revision 22:7:2025		
File Reference			Sheet			
	INTELLECTUAL PROPERTY OF LANDMARK LTD					

Operation & Maintenance (O&M) Manual – Wayfinding

Project: Didcot Wayfinding
Client: South Oxfordshire and Vale of White Horse Council
Supplier: Hornbeck Ltd t/a Landmark

Product Summary

The following external furniture items were designed, manufactured, and supplied by Landmark for Didcot:

Item Description	Key Materials / Finish
Totem A	Powder coated aluminium and stainless steel
Totem B	Powder coated aluminium and stainless steel
Waymarker post	Powder coated aluminium
Fingerpost	Powder coated aluminium
Community Board	Powder coated aluminium + glazing

Material & Finish Information

- Stainless-steel Components:
Internal structure and below ground elements for totems in grade 304.
- Aluminium Components:
Above ground external elements powder coated RAL2007

Maintenance Instructions

Stainless Steel (internal or below ground so maintenance unlikely):

- Clean with warm water and mild detergent to prevent tea-staining.
- Rinse thoroughly and wipe dry to prevent watermarks.

Powder coated aluminium:

- Clean with warm water and mild detergent to prevent tea-staining.
- Rinse thoroughly and wipe dry to prevent watermarks.
- In the event of graffiti use a standard graffiti remover and test compatibility and colour fading by applying a small amount in an inconspicuous area first.

Warranty Statement

Landmark products (unless otherwise specified) have a 1-year structural guarantee dating from delivery to site. This does not include:

- Damage subsequent to delivery if not caused by Landmark
- Damage caused by vandalism
- Deterioration caused by adverse conditions above or below ground

Contact Information

Landmark (Hornbeck Ltd t/a Landmark)
1 Centrus, Mead Lane, Hertford, SG13 7GX
01992 939279
enquiries@madebylandmark.com



CREATING UNFORGETTABLE PLACES.

0808 129 3773
enquiries@madebylandmark.com
www.madebylandmark.com

We can help you with:

- Branding and concept proposals
- Visitor experience enhancements
- Interpretation and graphic design
 - Wayfinding and site surveys
 - Fabrication and installation
- Maintenance and product care

Accreditations



FSC® certified products
available on request



Didcot Toolkit Waymarker.



1:5 ELEVATION AND SIDE VIEWS

WELDED ALUMINIUM FLAT TOP
TO POST PAINTED RAL 2007

WAYMARKERS CONSTRUCTED FROM
100 X 100 X 3 ALUMINIUM BOX SECTION
PAINTED TO MATCH BRIGHT ORANGE RAL 2007

INDICATIVE LAYOUT
TEXT DECORATED AS ARTWORK

GROUND LEVEL

INDICATIVE CONCRETE FOUNDATION,
SUBJECT TO GROUND CONDITIONS

WELDED 25 X 25 ANGLE
150mm LONG TO 1 SIDE
TO PREVENT PULL OUT

1:4 INDICATIVE COLOUR VISUAL

Material		ALL DIMENSIONS IN MM DO NOT ALTER CAD FILES	Created by N.Denton	Page Title
Colour	Scale 1:5,1:4	DO NOT SCALE FROM SHEET	Approved by Office:	Product PRIMARY WAY MARKER
Finish	Approximate Weight		Date 18:3:2025	Client DIDCOT SIGNAGE
	Revisions, Amendments and Notes Rev 1 - Base detail amended Rev 2 - Revised construction and quantity		Customer:	Job No. 31605
			Supplier:	
			Quantity 24	Range
			File Reference	
				Rev. 2
				Date of Revision 22:7:2025
				Sheet

Operation & Maintenance (O&M) Manual – Wayfinding

Project: Didcot Wayfinding
Client: South Oxfordshire and Vale of White Horse Council
Supplier: Hornbeck Ltd t/a Landmark

Product Summary

The following external furniture items were designed, manufactured, and supplied by Landmark for Didcot:

Item Description	Key Materials / Finish
Totem A	Powder coated aluminium and stainless steel
Totem B	Powder coated aluminium and stainless steel
Waymarker post	Powder coated aluminium
Fingerpost	Powder coated aluminium
Community Board	Powder coated aluminium + glazing

Material & Finish Information

- Stainless-steel Components:
Internal structure and below ground elements for totems in grade 304.
- Aluminium Components:
Above ground external elements powder coated RAL2007

Maintenance Instructions

Stainless Steel (internal or below ground so maintenance unlikely):

- Clean with warm water and mild detergent to prevent tea-staining.
- Rinse thoroughly and wipe dry to prevent watermarks.

Powder coated aluminium:

- Clean with warm water and mild detergent to prevent tea-staining.
- Rinse thoroughly and wipe dry to prevent watermarks.
- In the event of graffiti use a standard graffiti remover and test compatibility and colour fading by applying a small amount in an inconspicuous area first.

Warranty Statement

Landmark products (unless otherwise specified) have a 1-year structural guarantee dating from delivery to site. This does not include:

- Damage subsequent to delivery if not caused by Landmark
- Damage caused by vandalism
- Deterioration caused by adverse conditions above or below ground

Contact Information

Landmark (Hornbeck Ltd t/a Landmark)
1 Centrus, Mead Lane, Hertford, SG13 7GX
01992 939279
enquiries@madebylandmark.com



CREATING UNFORGETTABLE PLACES.

0808 129 3773
enquiries@madebylandmark.com
www.madebylandmark.com

We can help you with:

- Branding and concept proposals
- Visitor experience enhancements
- Interpretation and graphic design
 - Wayfinding and site surveys
 - Fabrication and installation
- Maintenance and product care

Accreditations



FSC® certified products
available on request

